

# Lokomotive BDZ Class 42



H0



III-V



PluX 22



0-12V DC



190

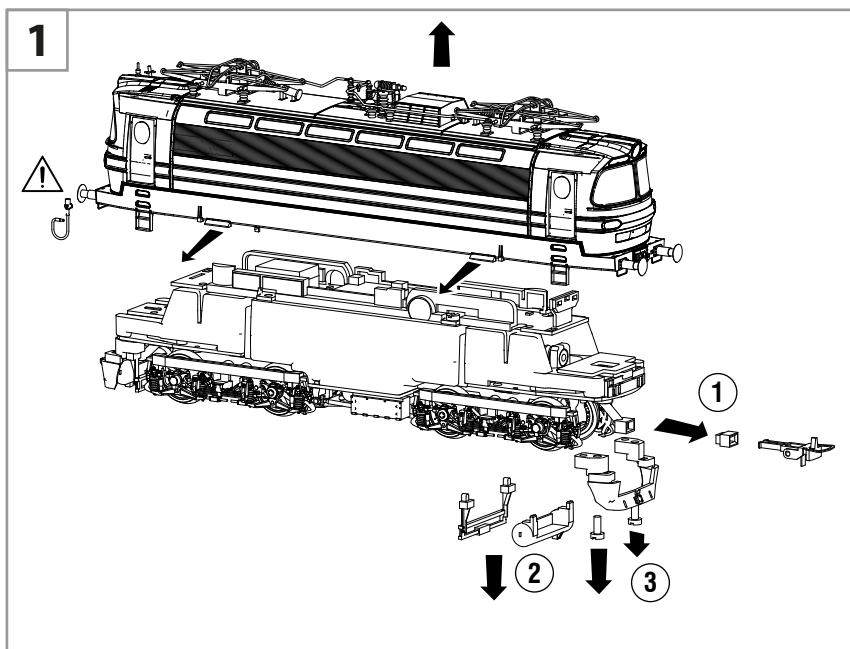


360



400

## Basic information



**Unpacking the model:** Remove the pads that prevent the model from moving in the box during transport. Then carefully remove the model.

**Commissioning:** Use a safe power supply with a maximum voltage of 12V DC. Before use, it is advisable to let the model run in both directions without load for about 10 minutes, so that all moving parts settle and the lubricant is properly distributed.

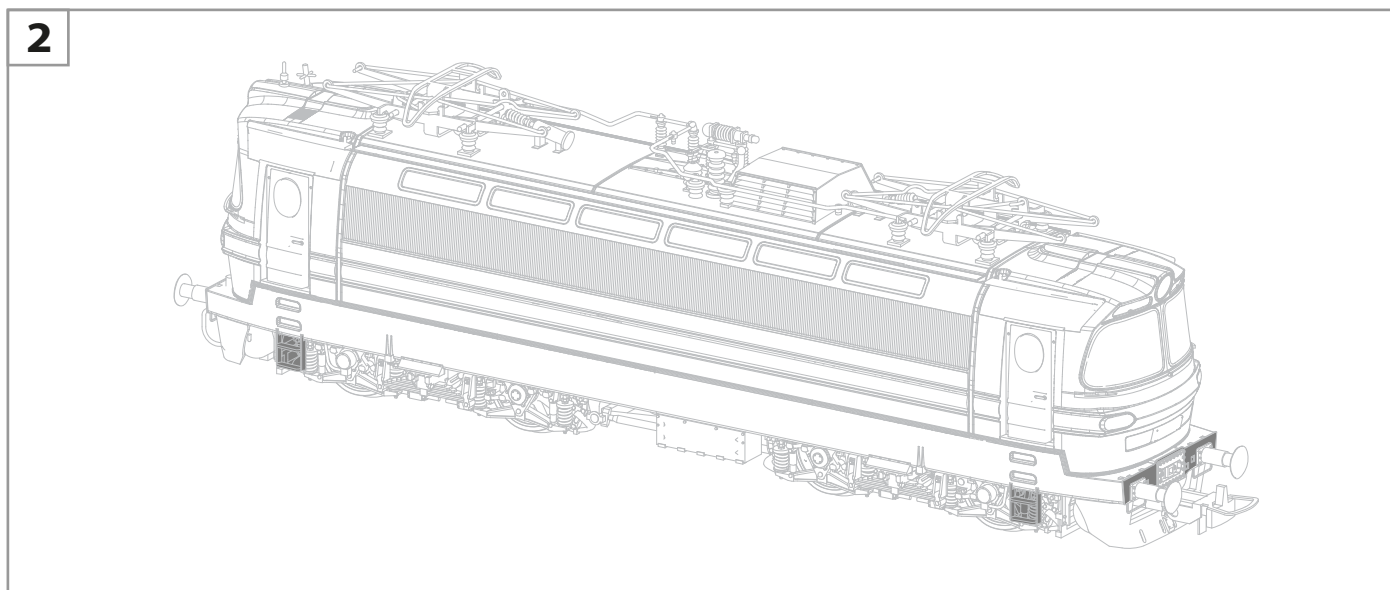
**Body removal:** The procedure shown in Fig. 1. Disconnect the heating coupling. Slightly stretch the body at the marked points and then remove the body.

**Plow replacement:** Pull out the coupling and the shaft extension. Pull the sensors and the air tank down. Remove the two screws. Replace the plow and assemble in the reverse order.

## Warning



The model contains metal etched parts, which are more susceptible to mechanical damage. These are highlighted in Fig. 2. Take extra care when handling.



**Warning**

**Designed for older than 15 years, it is not a toy. The model contains small parts that could be swallowed by children or inhaled. Operate under constant supervision, the model is not intended for commercial use.**

**Maintenance**

---

In order for the model to serve for a long and reliable time, pay regular inspection and maintenance.

**Cleaning:**

Use soft materials such as cotton wool or a piece of cloth to remove dirt from the wheels and bearings. Never use sharp tools, such as a screwdriver or a metal needle. A clean wheel surface is necessary for the smooth running of the model. Use only alcohol to clean the wheel surface.

**Lubrication:**

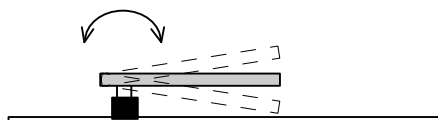
The gearbox is filled with a sufficient amount of lubricant for normal operation. Lubricant change or replenishment is only necessary during long-term intensive use. After cleaning, lubricate each bearing with a few drops of fine oil. Lubricate the gears and worm with a fine grease.

**Placing the analog jumper and decoder in the socket**

---

PluX 22 decoder :

Remove the decoder by gradually rocking it slightly.

**Warranty**

---

Store and transport the model only in the original box with foam lining. Do not expose to direct sunlight and temperatures above 40 ° C. Protect from the adverse effects of the environment.

**The manufacturer is not liable for damage caused by the carrier, for defects caused by rough handling, incorrect use or improper storage! The warranty also does not apply to models used commercially.**

**Recognition of the right to warranty repair is subject to the condition that the product has not been subjected to structural modifications or unauthorized assembly work on the product without the manufacturer's knowledge.**

At the end of its service life, hand over the model at an electrical waste collection point.

**This manual also serves as a warranty card.**